

A RESOLUTION OF THE BOARD OF DIRECTORS OF THE MT. CRESTED BUTTE WATER AND SANITATION DISTRICT RELATING TO THE EXPANSION OF THE DISTRICT'S SEWER COLLECTION CAPACITY AND AUTHORIZING AND ESTABLISHING THE CAPACITY EXPANSION SEWER TAP FEE AND THE METHODS OF CALCULATING THE SAME (THE "RESOLUTION").

WHEREAS:

- A. The Mt. Crested Butte Water & Sanitation District (the "**District**"), in the County of Gunnison, State of Colorado, is a quasi-municipal corporation and political subdivision of the State of Colorado, duly organized and existing under the Constitution and the laws of the State of Colorado, particularly the Special District Act, Title 32, Article 1, Colorado Revised Statutes ("**C.R.S.**"); and
- B. Pursuant to § 32-1-1001(1)(h), C.R.S., the Board of Directors of the District (the "**Board**") shall have the management, control and supervision of all the business and affairs of the District; and
- C. Pursuant to § 32-1-1001(1)(j)(I) and § 32-1-1006(1)(g), C.R.S., the District is authorized to fix, impose, and increase fees, rates, tolls, penalties and charges for services or facilities furnished by the District and is entitled to pledge such fees for the payment of any indebtedness of the District; and
- D. Pursuant to §32-1-1001(2), C.R.S., the Board, as a governing body furnishing domestic water or sanitary sewer services directly to residents and property owners within or outside of the District, may fix or increase fees, rates, tolls, penalties or charges for domestic water or sanitary sewer services only after consideration of the action at a public meeting held at least thirty (30) days after providing notice stating that the action is being considered and stating the date, time and place of the meeting at which the action is being considered; and
- E. Pursuant to § 32-1-1001(2)(a), C.R.S., the Board has provided the required thirty (30) days' notice to the residents and property owners within and outside of the District; and
- F. Capacity in the District's main sewer collection interceptor line along Gothic Road (the "**Trunk Line**") is limited and must be expanded in order to provide service to additional customers. Expansion of the Trunk Line consists of designing, installing and constructing the improvements necessary to expand the capacity of the Trunk Line to accommodate peak flows at District build out (the "**Capacity Expansion**"); and
- G. The need for the Capacity Expansion is driven by future growth and development that has been or may in the future be approved by the Town of Mt. Crested Butte within the area served by the Trunk Line (the "**Capacity Expansion Service Area**") and the resulting impacts of such growth and development on the District's sewer system. The properties within the Capacity Expansion Service Area (the "**Benefited Properties**") are depicted on **Exhibit A-1** as "To be Served" and listed by Assessor Parcel Number with a status of "To be Served" on **Exhibit A-2**; and
- H. The improvements to the Trunk line will be designed to accommodate the buildout peak flow defined in the report titled *Gothic Road Interceptor Improvements Preliminary Design Report*, dated May 2025; and

- I. Each of the Benefited Properties will benefit from the Capacity Expansion in a proportion equal to the amount of the additional peak hour flow made available by the Capacity Expansion that will be used by such property; and
- J. Accordingly, each of the Benefited Properties should be responsible for a percentage of the total cost of the Capacity Expansion equal to the amount of the additional peak hour flow made available by the Capacity Expansion that will be used by such property (the “**Proportionate Share**” for each of the Benefited Properties); and
- K. Therefore, the Board desires to impose a “**Capacity Expansion Sewer Tap Fee**” on each of the Benefited Properties in an amount equal to each such property’s Proportionate Share; and
- L. The Proportionate Share of each of the Benefited Properties is set forth on Exhibit A-2.

NOW, THEREFORE, BE IT RESOLVED by the Board of Directors of the Mt. Crested Butte Water & Sanitation District that:

- 1. The Board finds that the establishment of a fair and equitable Capacity Expansion Sewer Tap Fee to provide a source of funding to pay for the Capacity Expansion is necessary to provide for the common good and for the prosperity and general welfare of the District and its residents.
- 2. The purpose of the Capacity Expansion Sewer Tap Fee is to proportionally apportion and recover the capital costs of the Capacity Expansion necessary to meet future growth and development.
- 3. Accordingly, the Board has determined that the costs of the Capacity Expansion necessary to facilitate additional development within the District’s service area should be borne by the Benefited Properties.
- 4. The Board hereby imposes the Capacity Expansion Sewer Tap Fee against each of the Benefited Properties within the Capacity Expansion Service Area in an amount equal to each such property’s Proportionate Share.
- 5. The District’s determination of the Proportionate Share for each of the Benefited Properties and the amount of the Capacity Expansion Sewer Tap Fee for each of the Benefited Properties shall be final, binding, and conclusive.
- 6. A Developer must pay the District the Capacity Expansion Sewer Tap Fee before connecting to the District’s wastewater system.
- 7. Any person, natural or otherwise (a “**Developer**”), who has obtained or obtains a site specific development plan, vested right, building permit, or other land use change approval for any development (a “**Development Approval**”) on a Benefited Property within the Capacity Expansion Service Area, but who has not yet connected to the District’s wastewater system must pay the Capacity Expansion Sewer Tap Fee to the District.
- 8. In addition, if any land use change approval for any development on a property depicted on **Exhibit A-1** as “Constructed” as well as any Benefited Property (also a “Development Approval”) is a modification of a development that has already connected to the District’s wastewater system (a “**Prior Development**”), the Developer shall pay the District a

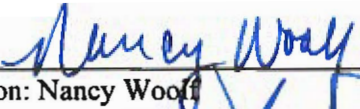
Capacity Expansion Sewer Tap Fee based on any increase in peak hour flow in gallons per minute between the Prior Development and the Development Approval, as determined by the District, which determination shall be final, binding, and conclusive. For purposes of this Resolution, a Benefited Property is “already connected to the District’s wastewater system” and constitutes a Prior Development if all or any portion of it is receiving wastewater service as of the date of this Resolution.

9. Until final completion of the Capacity Expansion, the amount of the Capacity Expansion Sewer Tap Fee for each of the Benefited Properties shall be calculated at the time this fee is paid based on the District’s most recent, good faith, estimate of the total cost of the Capacity Expansion. If the total actual cost of the Capacity Expansion upon completion is more than the estimated cost of the Capacity Expansion used to calculate the amount of the Capacity Expansion Sewer Tap Fee at the time it is owed, the Developer will not owe any additional amount of Capacity Expansion Sewer Tap Fee beyond what the Developer has already paid. If the total cost of the Capacity Expansion upon completion is less than the estimated cost of the Capacity Expansion used to calculate the amount of the Capacity Expansion Sewer Tap Fee at the time it is owed, the District will not be required to refund any amount of the Capacity Expansion Sewer Tap Fee already paid by the Developer.
10. Upon final completion of the Capacity Expansion, the amount of the Capacity Expansion Sewer Tap Fee for each of the Benefited Properties shall be calculated at the time this fee is paid based on the actual total cost of the Capacity Expansion, as determined by the District, which determination shall be final, binding, and conclusive.
11. Nothing in this Resolution requires the District to complete the Capacity Expansion at any particular time. The decision about when to commence construction of the Capacity Expansion shall at all times remain in the sole, subjective discretion of the District and will likely depend on the availability of, and terms for, the financing of the Capacity Expansion.
12. At all times before and after implementation of the Capacity Expansion Sewer Tap Fee and the construction of the Capacity Expansion, the determination of whether the District has adequate capacity to provide wastewater service to any particular development shall remain in the sole, subjective discretion of the District.
13. The Board finds that the Capacity Expansion Sewer Tap Fee is reasonably related to the overall cost of designing, installing, and constructing the Capacity Expansion, and that imposition thereof is necessary and appropriate.
14. In accordance with C.R.S. § 29-20-203(1), the Capacity Expansion Sewer Tap Fee applies to a broad class of property owners consisting of all new development utilizing the Capacity Expansion. It is a one-time charge designed to defray the cost of expanding the Trunk Line as development increases the demand for the District services on the Trunk Line, and the Capacity Expansion will be used exclusively to provide the additional capacity in the Trunk Line necessary to meet future growth and development utilizing that Trunk Line.
15. Consequently, the Board finds that there is an essential nexus between the Capacity Expansion Sewer Tap Fee and the legitimate local government interest in the Capacity Expansion, and that the Capacity Expansion Sewer Tap Fee is proportional to both the nature and extent of the impact of new development on the Trunk Line.

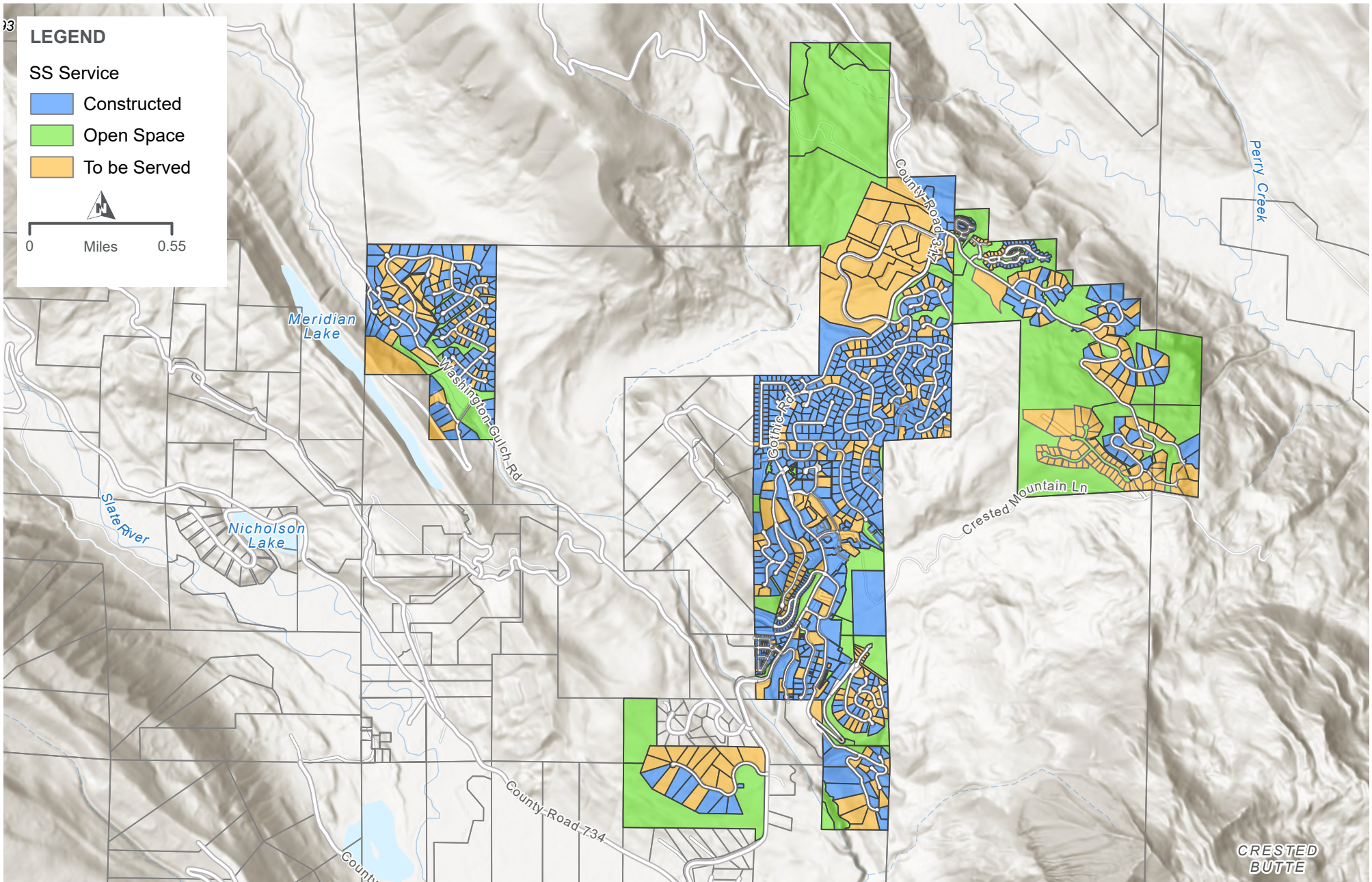
16. The cost of the Capacity Expansion is in addition to the assumptions used to calculate the existing tap fee charged by the District. Revenue generated by the District's existing tap fee is used for current capital improvements. In contrast, revenue generated by the Capacity Expansion Sewer Tap Fee will be used exclusively to complete the Capacity Expansion necessary to provide wastewater treatment services to future growth and development within the Capacity Expansion Service Area.
17. The Board finds that the methodology and approach to calculate the Capacity Expansion Sewer Tap Fee is based on generally accepted and judicially approved methodologies consistent with Colorado law. *See generally Wolf Ranch, LLC v. City of Colorado Springs*, 220 P.3d 559, 563-63, 66 (Colo. 2009).
18. All orders, bylaws and resolutions of the District, or parts thereof, inconsistent or in conflict with this Resolution, are hereby repealed to the extent only of such inconsistency or conflict.
19. If any section, paragraph, clause or provision of this Resolution shall for any reason be held to be invalid or unenforceable, the invalidity or unenforceability of such section, paragraph, clause or provision shall not affect any of the remaining provisions of this Resolution, the intent being that the same are severable.
20. This Resolution shall take effect immediately upon its approval and adoption.

APPROVED AND ADOPTED by the Board of Directors of the District on this 20th day of May 2025.

MT. CRESTED BUTTE WATER AND SANITATION DISTRICT,
A Colorado Special District

BY: 
Chairperson: Nancy Woolf

ATTEST: 
Board Secretary: Kent Fulton



LEGEND

SS Service

- Constructed
- Open Space
- To be Served



0 Miles 0.55



CRESTED BUTTE

EXHIBIT A-1

PARCELS WITH SEWER SERVICE

EXHIBIT A-2

Parcel Number	Status	Peak Hour Flow (gpd)	% of Total
317519001001	To be Served	3,663	0.24%
317519301001	To be Served	3,663	0.24%
317519301002	To be Served	3,663	0.24%
317519301006	To be Served	3,663	0.24%
317713300011	To be Served	30,525	1.97%
317713301001	To be Served	24,664	1.59%
317713301002	To be Served	15,873	1.02%
317713301003	To be Served	18,559	1.20%
317713302001	To be Served	8,547	0.55%
317713302002	To be Served	13,675	0.88%
317713304021	To be Served	977	0.06%
317714001001	To be Served	23,443	1.51%
317714001002	To be Served	20,024	1.29%
317714001003	To be Served	5,861	0.38%
317714001004	To be Served	9,768	0.63%
317722202004	To be Served	1,709	0.11%
317722202006	To be Served	1,954	0.13%
317722202008	To be Served	1,954	0.13%
317722202012	To be Served	1,709	0.11%
317722202014	To be Served	1,709	0.11%
317722203006	To be Served	1,709	0.11%
317722203007	To be Served	1,709	0.11%
317722203010	To be Served	2,686	0.17%
317722203013	To be Served	1,709	0.11%
317722203016	To be Served	1,954	0.13%
317722203017	To be Served	1,709	0.11%
317722203019	To be Served	1,709	0.11%
317722203023	To be Served	2,198	0.14%
317722203029	To be Served	2,442	0.16%
317722205002	To be Served	1,709	0.11%
317722205013	To be Served	1,709	0.11%
317722205015	To be Served	1,709	0.11%
317722205019	To be Served	1,709	0.11%
317722205020	To be Served	1,709	0.11%
317722206012	To be Served	1,709	0.11%
317722207007	To be Served	1,709	0.11%
317722207009	To be Served	1,954	0.13%
317722208001	To be Served	2,686	0.17%
317722208003	To be Served	2,442	0.16%
317722208009	To be Served	3,663	0.24%
317722209009	To be Served	3,663	0.24%

EXHIBIT A-2

Parcel Number	Status	Peak Hour Flow (gpd)	% of Total
317722209017	To be Served	3,663	0.24%
317722209020	To be Served	3,663	0.24%
317722209023	To be Served	3,663	0.24%
317722209024	To be Served	3,663	0.24%
317722209026	To be Served	3,663	0.24%
317722209029	To be Served	3,663	0.24%
317722209030	To be Served	3,663	0.24%
317722210004	To be Served	3,663	0.24%
317722210005	To be Served	3,663	0.24%
317722210006	To be Served	3,663	0.24%
317722210008	To be Served	3,663	0.24%
317722210010	To be Served	3,663	0.24%
317722210014	To be Served	3,663	0.24%
317722210016	To be Served	3,663	0.24%
317722210017	To be Served	3,663	0.24%
317722210019	To be Served	3,663	0.24%
317722210020	To be Served	3,663	0.24%
317722210021	To be Served	3,663	0.24%
317722211004	To be Served	2,442	0.16%
317722211005	To be Served	3,175	0.20%
317722213005	To be Served	3,663	0.24%
317722213006	To be Served	3,663	0.24%
317722213009	To be Served	3,663	0.24%
317722301011	To be Served	2,198	0.14%
317722302003	To be Served	3,663	0.24%
317722302007	To be Served	3,663	0.24%
317723101003	To be Served	2,686	0.17%
317723101004	To be Served	2,686	0.17%
317723101018	To be Served	2,442	0.16%
317723101027	To be Served	3,419	0.22%
317723101049	To be Served	2,442	0.16%
317723102002	To be Served	2,686	0.17%
317723102010	To be Served	1,954	0.13%
317723103001	To be Served	14,896	0.96%
317723103002	To be Served	18,803	1.21%
317723104001	To be Served	13,919	0.90%
317723104002	To be Served	15,385	0.99%
317723104003	To be Served	11,966	0.77%
317723400019	To be Served	6,349	0.41%
317723402005	To be Served	2,686	0.17%
317723403009	To be Served	3,419	0.22%

EXHIBIT A-2

Parcel Number	Status	Peak Hour Flow (gpd)	% of Total
317723403010	To be Served	3,419	0.22%
317723403012	To be Served	2,930	0.19%
317723404026	To be Served	3,419	0.22%
317723404027	To be Served	3,419	0.22%
317723404048	To be Served	3,175	0.20%
317723406021	To be Served	1,465	0.09%
317723407032	To be Served	1,465	0.09%
317723408003	To be Served	3,663	0.24%
317723409015	To be Served	1,709	0.11%
317723410001	To be Served	3,419	0.22%
317723410008	To be Served	3,175	0.20%
317723410029	To be Served	2,686	0.17%
317723410032	To be Served	3,419	0.22%
317723411002	To be Served	3,175	0.20%
317723411003	To be Served	2,686	0.17%
317723411036	To be Served	3,663	0.24%
317723412011	To be Served	2,442	0.16%
317723412018	To be Served	2,930	0.19%
317723416008	To be Served	2,686	0.17%
317723417013	To be Served	3,663	0.24%
317723418019	To be Served	4,396	0.28%
317723418020	To be Served	17,582	1.13%
317723419005	To be Served	2,686	0.17%
317724101005	To be Served	3,419	0.22%
317724101006	To be Served	3,663	0.24%
317724101007	To be Served	3,663	0.24%
317724101009	To be Served	3,663	0.24%
317724101010	To be Served	3,663	0.24%
317724101012	To be Served	3,663	0.24%
317724101017	To be Served	3,419	0.22%
317724101020	To be Served	3,175	0.20%
317724101022	To be Served	3,663	0.24%
317724101023	To be Served	3,663	0.24%
317724101024	To be Served	3,175	0.20%
317724101028	To be Served	3,663	0.24%
317724102002	To be Served	3,663	0.24%
317724103002	To be Served	3,663	0.24%
317724106001	To be Served	3,663	0.24%
317724106002	To be Served	3,663	0.24%
317724106003	To be Served	3,663	0.24%
317724106006	To be Served	3,663	0.24%

EXHIBIT A-2

Parcel Number	Status	Peak Hour Flow (gpd)	% of Total
317724107001	To be Served	3,663	0.24%
317724201002	To be Served	2,442	0.16%
317724201010	To be Served	1,709	0.11%
317724204003	To be Served	1,709	0.11%
317724209002	To be Served	10,012	0.64%
317724209004	To be Served	21,490	1.38%
317724209006	To be Served	15,873	1.02%
317724209007	To be Served	13,187	0.85%
317724210004	To be Served	2,442	0.16%
317724210005	To be Served	3,175	0.20%
317724210007	To be Served	3,419	0.22%
317724210009	To be Served	3,175	0.20%
317724210011	To be Served	1,954	0.13%
317724210022	To be Served	1,709	0.11%
317724210030	To be Served	1,954	0.13%
317724210032	To be Served	3,663	0.24%
317724210034	To be Served	2,198	0.14%
317724211018	To be Served	2,198	0.14%
317724211019	To be Served	1,954	0.13%
317724211020	To be Served	3,663	0.24%
317724211023	To be Served	3,175	0.20%
317724211025	To be Served	3,175	0.20%
317724213001	To be Served	3,663	0.24%
317724215001	To be Served	977	0.06%
317724215002	To be Served	977	0.06%
317724215003	To be Served	977	0.06%
317724215004	To be Served	977	0.06%
317724215005	To be Served	977	0.06%
317724215006	To be Served	977	0.06%
317724215007	To be Served	977	0.06%
317724215008	To be Served	977	0.06%
317724215009	To be Served	977	0.06%
317724215010	To be Served	977	0.06%
317724215011	To be Served	977	0.06%
317724215012	To be Served	1,221	0.08%
317724215013	To be Served	977	0.06%
317724215014	To be Served	977	0.06%
317724215057	To be Served	977	0.06%
317724215058	To be Served	1,221	0.08%
317724215060	To be Served	977	0.06%
317724215061	To be Served	977	0.06%

EXHIBIT A-2

Parcel Number	Status	Peak Hour Flow (gpd)	% of Total
317724215062	To be Served	977	0.06%
317724301014	To be Served	2,442	0.16%
317724301027	To be Served	1,954	0.13%
317724301028	To be Served	2,686	0.17%
317724301029	To be Served	3,419	0.22%
317724302005	To be Served	2,442	0.16%
317724302010	To be Served	3,663	0.24%
317724302021	To be Served	2,442	0.16%
317724302034	To be Served	3,663	0.24%
317724303009	To be Served	2,198	0.14%
317724303018	To be Served	1,709	0.11%
317724303020	To be Served	2,198	0.14%
317724303021	To be Served	2,930	0.19%
317724303022	To be Served	2,198	0.14%
317724303025	To be Served	1,709	0.11%
317724303026	To be Served	1,709	0.11%
317724401003	To be Served	3,663	0.24%
317724401005	To be Served	3,663	0.24%
317724401007	To be Served	3,663	0.24%
317724401008	To be Served	3,663	0.24%
317724401009	To be Served	3,663	0.24%
317724401010	To be Served	3,663	0.24%
317724401011	To be Served	3,663	0.24%
317724401012	To be Served	3,663	0.24%
317724402001	To be Served	3,663	0.24%
317724402002	To be Served	3,419	0.22%
317724402004	To be Served	3,663	0.24%
317724402010	To be Served	3,663	0.24%
317724402013	To be Served	2,198	0.14%
317724403001	To be Served	3,663	0.24%
317724403002	To be Served	3,663	0.24%
317724405002	To be Served	3,663	0.24%
317724405005	To be Served	3,175	0.20%
317726100054	To be Served	6,105	0.39%
317726100067	To be Served	12,698	0.82%
317726100099	To be Served	5,617	0.36%
317726100109	To be Served	2,930	0.19%
317726102003	To be Served	2,442	0.16%
317726110009	To be Served	3,663	0.24%
317726110010	To be Served	2,686	0.17%
317726110011	To be Served	2,686	0.17%

EXHIBIT A-2

Parcel Number	Status	Peak Hour Flow (gpd)	% of Total
317726110018	To be Served	3,419	0.22%
317726110019	To be Served	3,663	0.24%
317726110036	To be Served	5,861	0.38%
317726110042	To be Served	17,582	1.13%
317726129024	To be Served	8,303	0.53%
317726137001	To be Served	733	0.05%
317726137002	To be Served	733	0.05%
317726137003	To be Served	733	0.05%
317726137004	To be Served	733	0.05%
317726137005	To be Served	977	0.06%
317726137006	To be Served	977	0.06%
317726137007	To be Served	977	0.06%
317726137008	To be Served	733	0.05%
317726137009	To be Served	733	0.05%
317726137010	To be Served	733	0.05%
317726137011	To be Served	733	0.05%
317726137012	To be Served	733	0.05%
317726137013	To be Served	977	0.06%
317726137014	To be Served	1,221	0.08%
317726137015	To be Served	1,221	0.08%
317726137016	To be Served	1,221	0.08%
317726137017	To be Served	977	0.06%
317726137018	To be Served	1,465	0.09%
317726137019	To be Served	1,221	0.08%
317726139001	To be Served	3,663	0.24%
317726139002	To be Served	3,419	0.22%
317726139003	To be Served	6,105	0.39%
317726139004	To be Served	9,524	0.61%
317726139005	To be Served	21,245	1.37%
317726140002	To be Served	19,536	1.26%
317726141001	To be Served	12,698	0.82%
317726141003	To be Served	9,035	0.58%
317726141004	To be Served	25,641	1.65%
317726141005	To be Served	19,536	1.26%
317726141006	To be Served	8,303	0.53%
317726141008	To be Served	10,745	0.69%
317726165001	To be Served	11,477	0.74%
317726302001	To be Served	3,663	0.24%
317726302002	To be Served	3,663	0.24%
317726302003	To be Served	3,663	0.24%
317726302004	To be Served	3,663	0.24%

EXHIBIT A-2

Parcel Number	Status	Peak Hour Flow (gpd)	% of Total
317726302005	To be Served	3,663	0.24%
317726302006	To be Served	3,663	0.24%
317726302007	To be Served	3,663	0.24%
317726302008	To be Served	3,663	0.24%
317726400004	To be Served	3,663	0.24%
317726400039	To be Served	13,675	0.88%
317726400042	To be Served	5,128	0.33%
317726400053	To be Served	3,663	0.24%
317726400056	To be Served	3,175	0.20%
317726400057	To be Served	977	0.06%
317726401033	To be Served	2,198	0.14%
317726401035	To be Served	9,768	0.63%
317726402016	To be Served	1,465	0.09%
317726402017	To be Served	1,221	0.08%
317726402034	To be Served	2,930	0.19%
317726402035	To be Served	1,709	0.11%
317726403021	To be Served	3,907	0.25%
317726414001	To be Served	977	0.06%
317726420007	To be Served	3,663	0.24%
317726420008	To be Served	1,954	0.13%
317726420017	To be Served	3,175	0.20%
317726423001	To be Served	3,419	0.22%
317726423005	To be Served	2,930	0.19%
317726429001	To be Served	1,709	0.11%
317726429002	To be Served	1,954	0.13%
317726429003	To be Served	1,709	0.11%
317726429005	To be Served	1,709	0.11%
317726429009	To be Served	2,930	0.19%
317726429011	To be Served	2,198	0.14%
317726429012	To be Served	2,442	0.16%
317726429018	To be Served	3,663	0.24%
317726430001	To be Served	1,709	0.11%
317726430002	To be Served	1,954	0.13%
317726430004	To be Served	1,709	0.11%
317726434001	To be Served	2,442	0.16%
317726434005	To be Served	2,198	0.14%
317726436002	To be Served	3,663	0.24%
317726438003	To be Served	2,930	0.19%
317726438004	To be Served	3,419	0.22%
317726438005	To be Served	3,419	0.22%
317726438006	To be Served	3,663	0.24%

EXHIBIT A-2

Parcel Number	Status	Peak Hour Flow (gpd)	% of Total
317726438009	To be Served	2,442	0.16%
317726438010	To be Served	2,198	0.14%
317726440014	To be Served	1,221	0.08%
317726441012	To be Served	977	0.06%
317726463006	To be Served	1,221	0.08%
317726463007	To be Served	1,465	0.09%
317726463008	To be Served	1,465	0.09%
317726463009	To be Served	1,465	0.09%
317726463010	To be Served	977	0.06%
317726463011	To be Served	977	0.06%
317726463012	To be Served	977	0.06%
317726463013	To be Served	977	0.06%
317735101005	To be Served	2,930	0.19%
317735101008	To be Served	3,663	0.24%
317735101018	To be Served	3,663	0.24%
317735101019	To be Served	3,663	0.24%
317735101020	To be Served	3,663	0.24%
317735101022	To be Served	3,663	0.24%
317735201001	To be Served	3,663	0.24%
317735201002	To be Served	3,663	0.24%
317735201003	To be Served	3,663	0.24%
317735202006	To be Served	3,663	0.24%
317735202009	To be Served	3,663	0.24%
E-21	To be Served	3,663	0.24%
E-22	To be Served	3,663	0.24%
E-23	To be Served	3,663	0.24%
E-24	To be Served	3,663	0.24%
E-25	To be Served	3,663	0.24%
E-26	To be Served	3,663	0.24%
E-27	To be Served	3,663	0.24%
E-28	To be Served	3,419	0.22%
E-29	To be Served	3,419	0.22%
E-30	To be Served	3,663	0.24%
E-31	To be Served	3,663	0.24%
E-32	To be Served	3,663	0.24%
E-34	To be Served	2,198	0.14%
E-35	To be Served	2,198	0.14%
E-36	To be Served	2,198	0.14%
E-37	To be Served	2,198	0.14%
E-38	To be Served	2,198	0.14%
E-39	To be Served	2,198	0.14%

EXHIBIT A-2

Parcel Number	Status	Peak Hour Flow (gpd)	% of Total
E-40	To be Served	3,419	0.22%
E-41	To be Served	3,175	0.20%
E-42	To be Served	3,419	0.22%
E-43	To be Served	3,663	0.24%
E-44	To be Served	3,663	0.24%
E-45	To be Served	3,663	0.24%
E-46	To be Served	3,663	0.24%
E-47	To be Served	3,663	0.24%
E-48	To be Served	3,663	0.24%
E-49	To be Served	3,663	0.24%
E-50	To be Served	3,663	0.24%
F-1	To be Served	2,198	0.14%
F-10	To be Served	2,198	0.14%
F-11	To be Served	1,954	0.13%
F-12	To be Served	1,954	0.13%
F-13	To be Served	2,198	0.14%
F-14	To be Served	2,198	0.14%
F-15	To be Served	2,198	0.14%
F-16	To be Served	2,198	0.14%
F-17	To be Served	2,198	0.14%
F-18	To be Served	2,198	0.14%
F-19	To be Served	2,198	0.14%
F-2	To be Served	1,954	0.13%
F-20	To be Served	2,198	0.14%
F-21	To be Served	2,198	0.14%
F-22	To be Served	2,198	0.14%
F-23	To be Served	2,198	0.14%
F-3	To be Served	2,198	0.14%
F-4	To be Served	1,954	0.13%
F-5	To be Served	1,954	0.13%
F-6	To be Served	2,198	0.14%
F-7	To be Served	1,954	0.13%
F-8	To be Served	2,198	0.14%
F-9	To be Served	1,954	0.13%
PARCEL B	To be Served	68,620	4.42%
PARCEL G	To be Served	51,282	3.30%
PHASE 7	To be Served	17,582	1.13%